



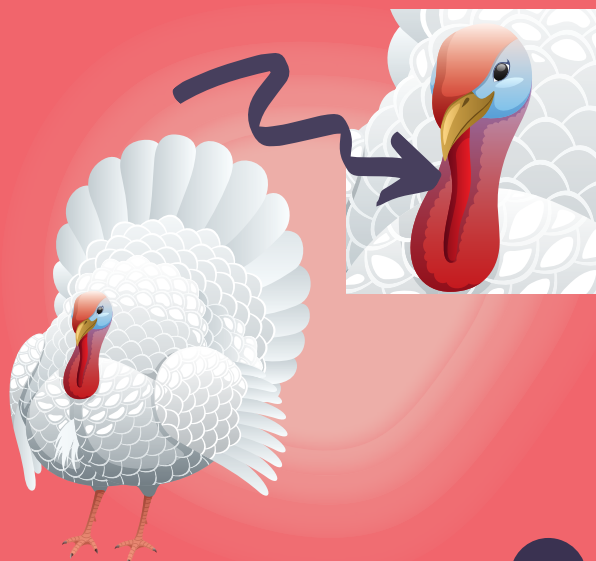
FUN FACTS ABOUT TURKEYS

Some turkeys will form bonds with human caregivers and enjoy human companionship, seeking out the human for cuddles.



Turkeys also form tight knit social groupings and can easily distinguish a family or flock member from an unfamiliar turkey.

Turkeys have a flap of skin called a wattle and another called a snood. This is more noticeable in toms. Careful observation of the color (red, pink, blue, grey) of a turkey's wattle can be an indicator of how a turkey is feeling!



Turkeys have a wide array of vocalisations with very different meanings. Some of these are a tom's gobble, a poult's (baby turkey's) peeps, and a hen's yelp!

LEARN MORE @

WWW.OPENSANCTUARY.ORG

